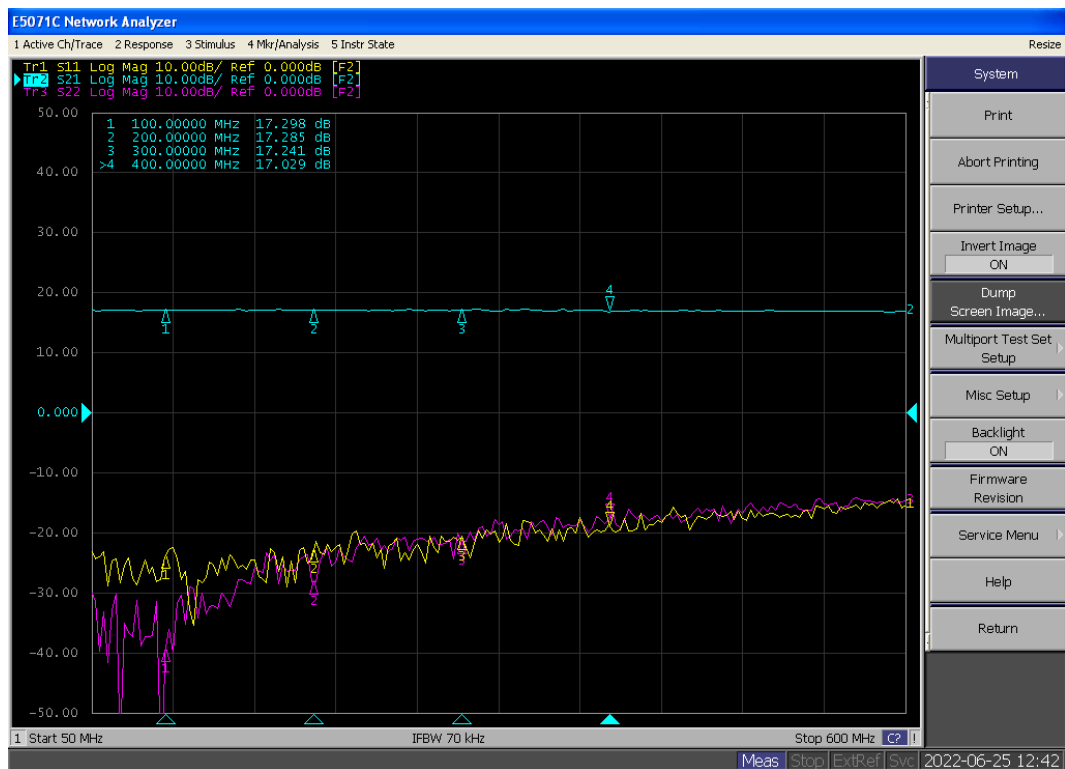


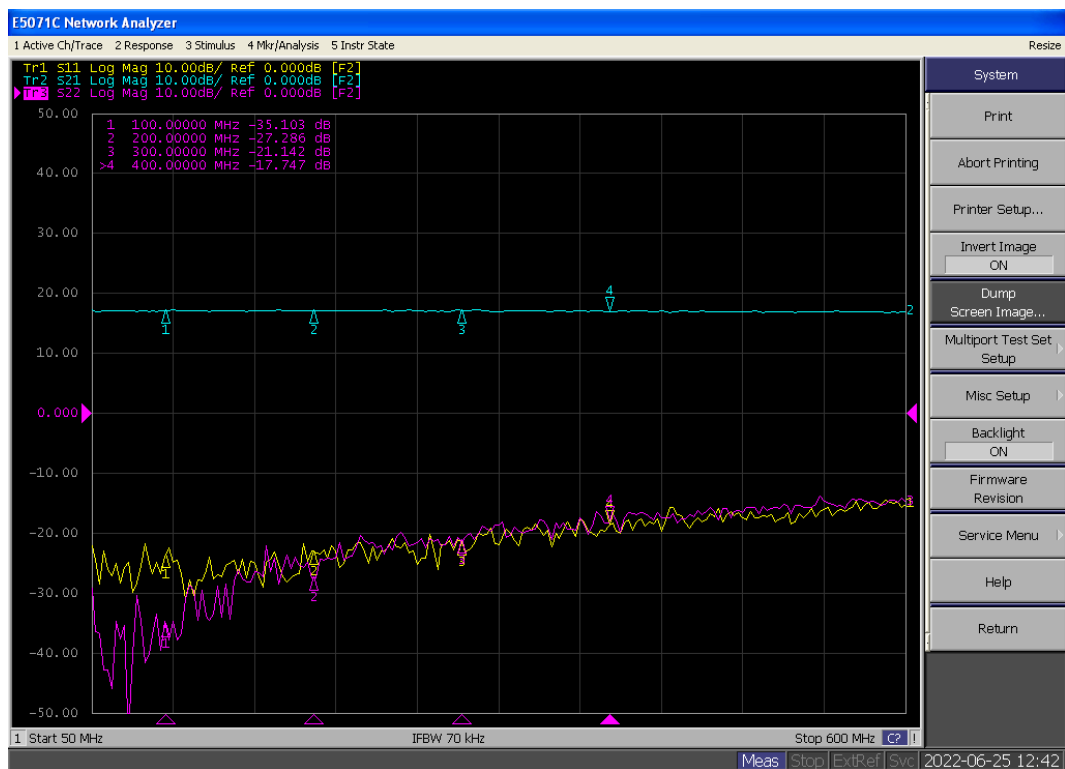
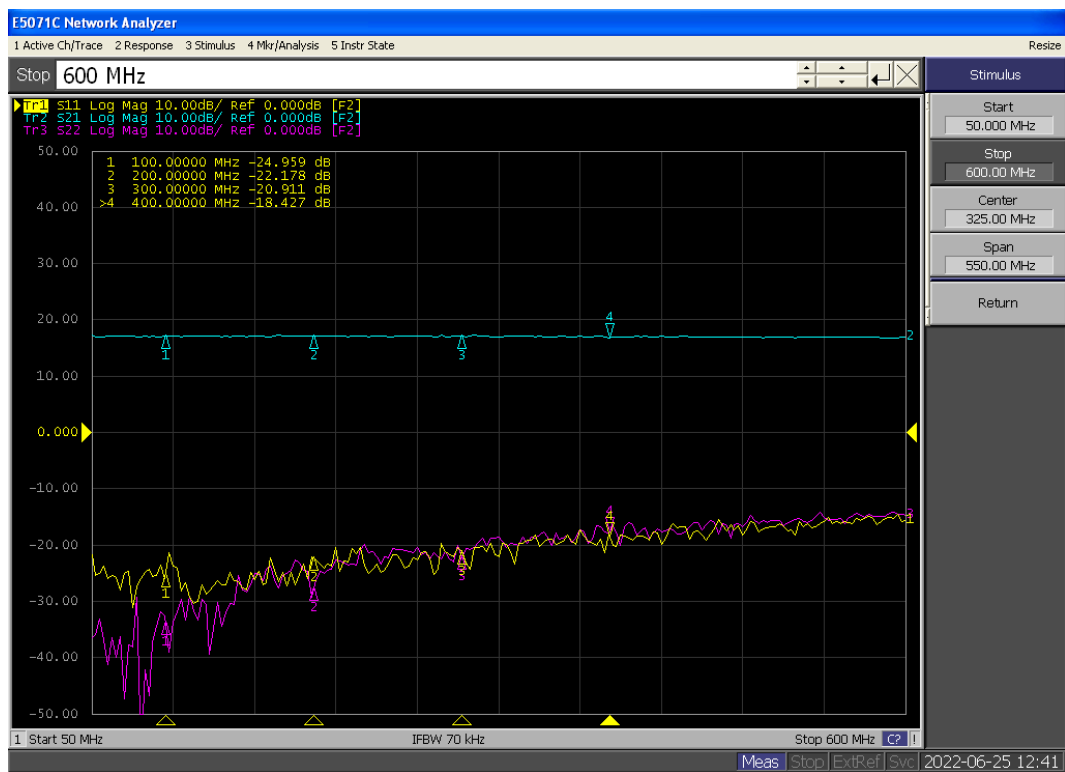
ZDH3003 100-400MHz-5V 应用笔记

一、射频指标

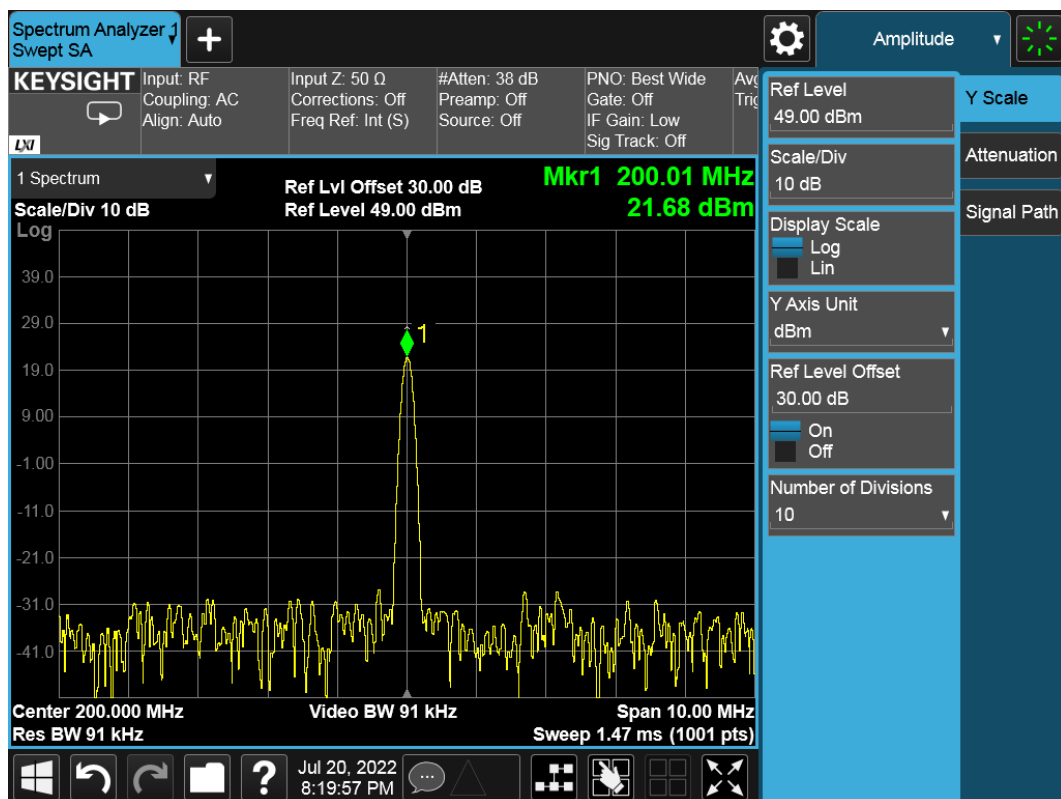
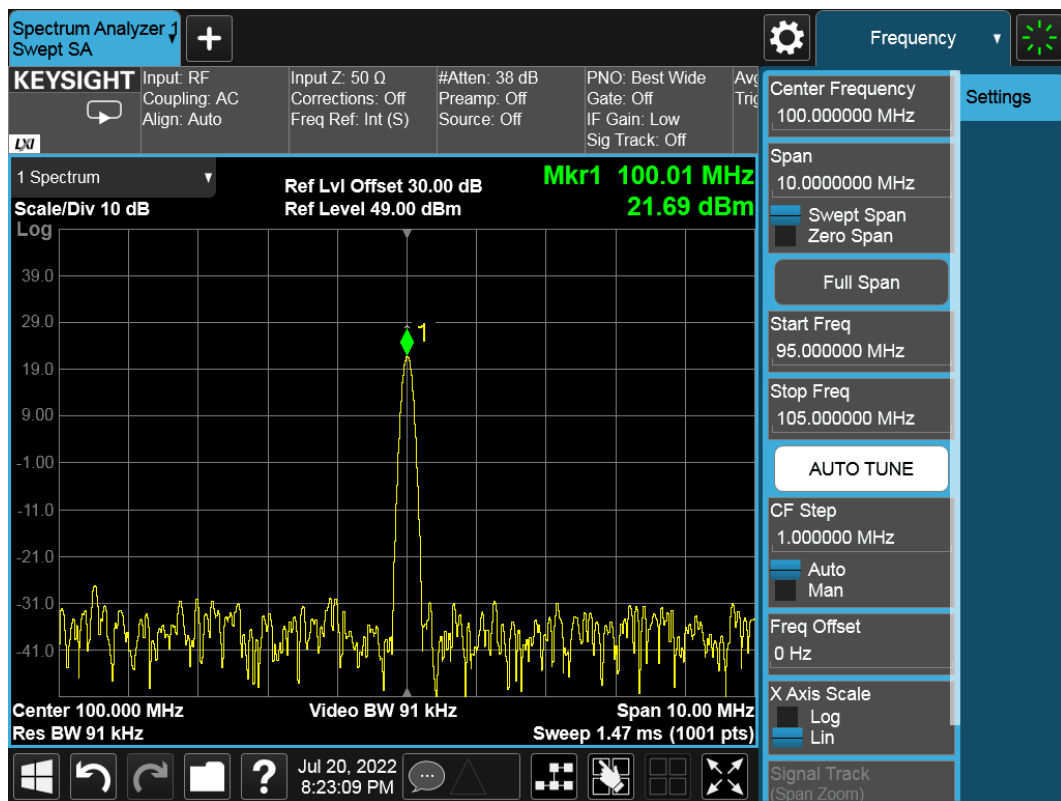
工作频率 (Frq)	MHz	100	200	300	400
增益 (S21)	dB	17.29	17.28	17.24	17.02
输入回损 (S11)	dB	-24.95	-22.17	-20.91	-18.42
输出回损 (S22)	dB	-35.10	-27.28	-21.14	-17.74
P1dB 功率 (Pout)	dBm	21.47	21.36	21.50	21.43
输入功率(Pin)	dBm	5	5	5	5
P1dB 工作电流 (Icc)	mA	93	96	97	99
工作电压 (VCC)	V	5	5	5	5
静态电流 (Icq)	mA	109	109	109	109
OIP3	dBm	40	39	38.5	38.5
输出饱和功率 (Pout)	dBm	21.69	21.68	21.92	21.92
饱和时输入功率 (Pin)	dBm	6	6	7	7
饱和时工作电流 (Icc)	mA	84	88	85	86

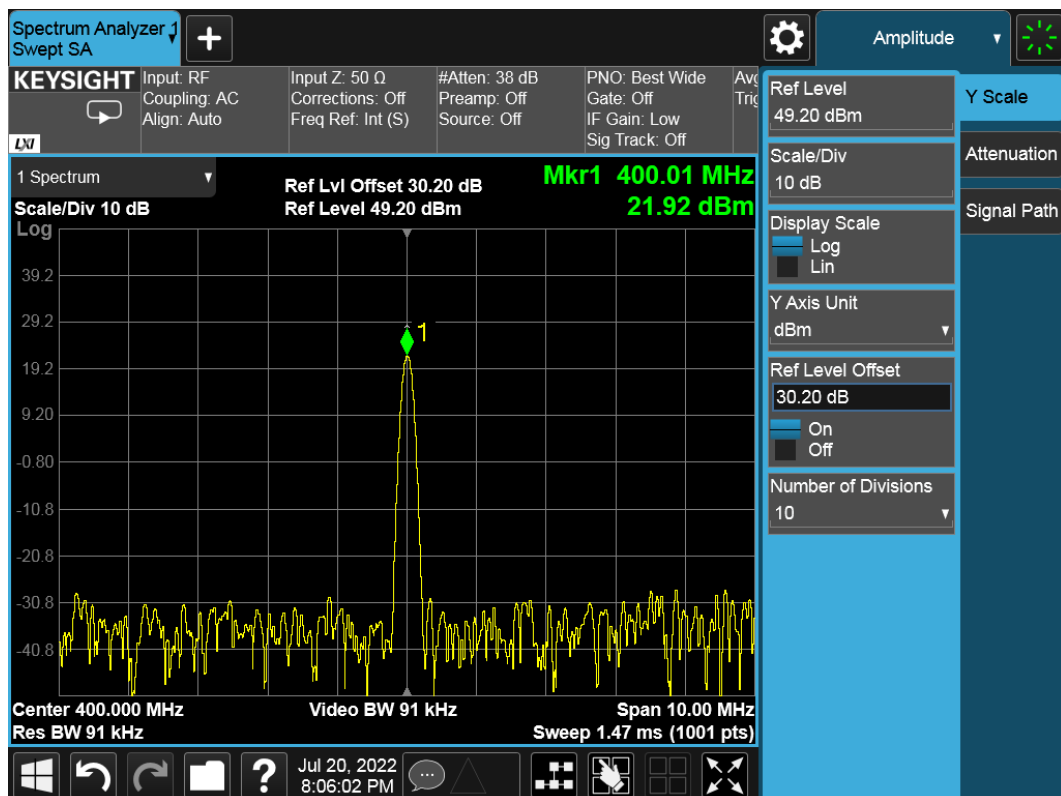
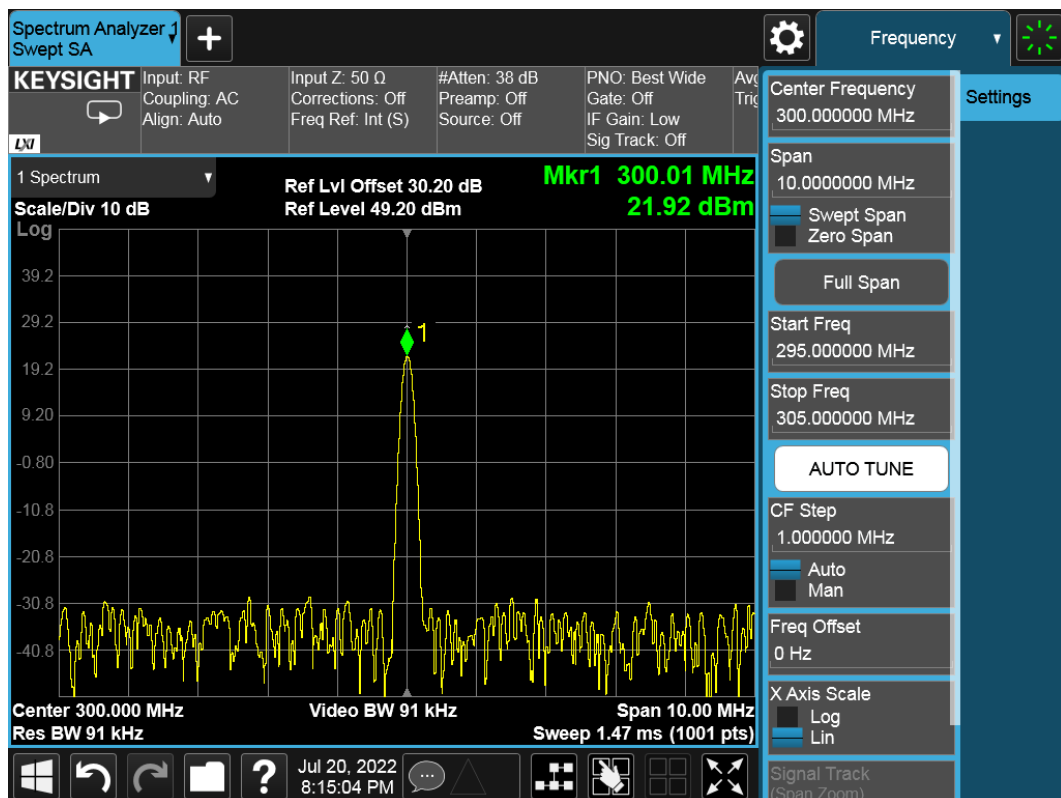
二、实测 S 参数图



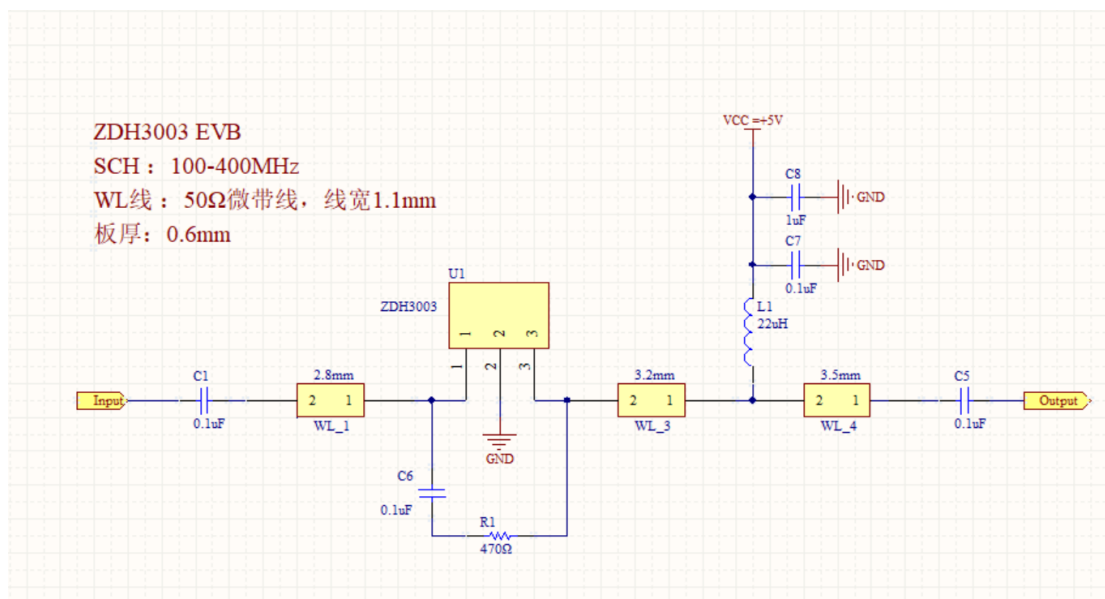


三、实测输出功率图

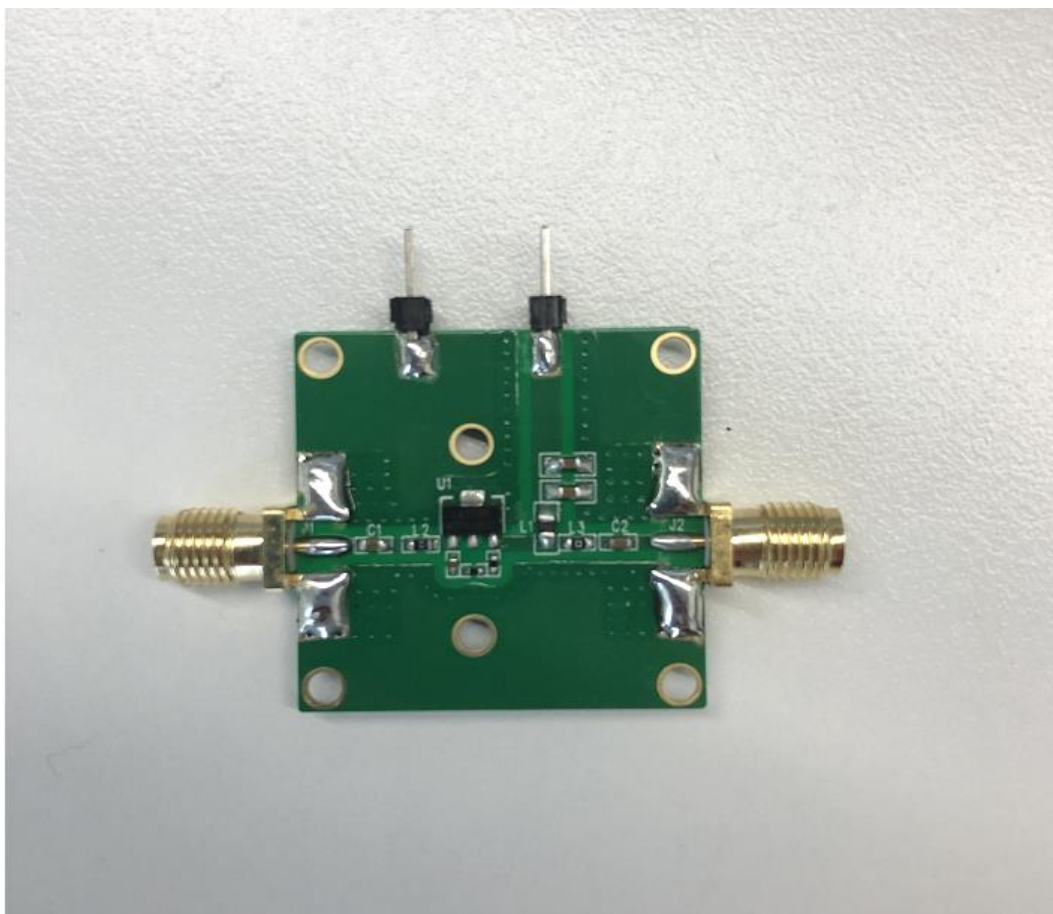




四、评估板原理图



五、评估板实物图



北京中电宏业科技有限公司
技术部:陈泽钊
2022.7.22